

**CERTIFIED LAND CORNER RECORDATION**

LOCATION

$\frac{1}{4}$  S.11  
 $\frac{1}{4}$  S.14  
 T.14N., R.65W.  
 6th P.M.

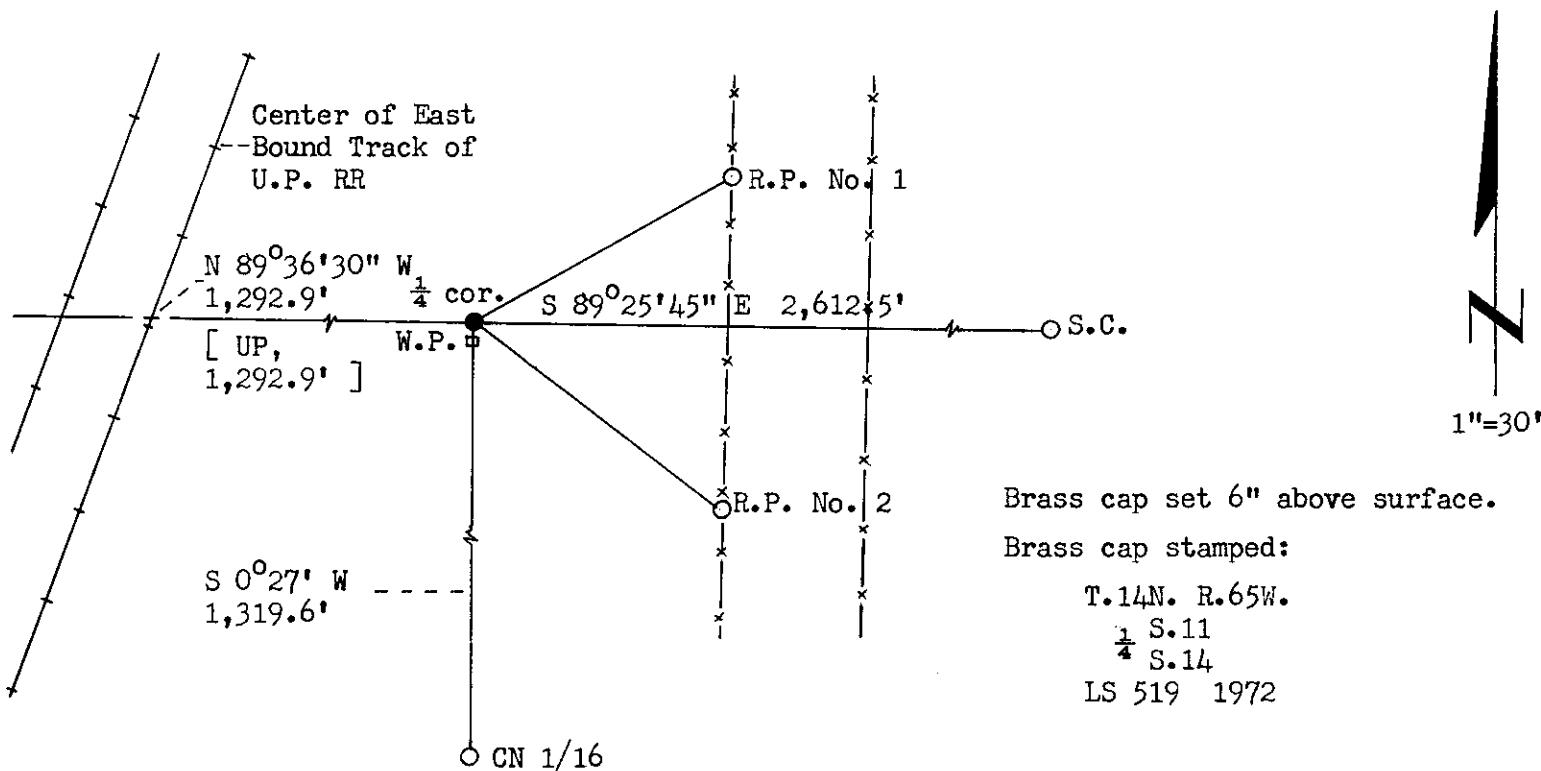
DESCRIPTION OF CORNER EVIDENCE FOUND, AND ORIGINAL RECORD (if known)

1. Corner falls in wheat field, no corner monument found.
2. G.L.O. record, "Set Granite Boulder 14 x 8 x 5 for  $\frac{1}{4}$  Sec Cor,".
3. Corner position determined by distance tie by U.P. RR .

DESCRIPTION OF MONUMENT AND ACCESSORIES ESTABLISHED TO PERPETUATE THE ORIGINAL LOCATION OF THIS CORNER:

1. Set standard U.S. 2" galv. iron pipe with brass cap for corner.
2. R.P. No. 1 - A 5/8" dia. x 24" long rebar with Surv KAP bears N 61°09' E, 46.03 feet distant.  
 R.P. No. 2 - A 5/8" dia. x 24" long rebar with Surv KAP bears S 53°11' E, 48.28 feet distant.  
 W.P. - A 4" x 4" post (scribed) bears S'ly, 2 feet distant.

SKETCH, WITH COURSE AND DISTANCE TO ADJACENT CORNER IF DETERMINED IN THIS SURVEY.  
 (May Sketch or Paste Reproduction on Reverse Side.)



I, R.L. Hudson certify that I have carefully performed or reviewed the work done on the diagrammed corner as reported on this recordation form and approve the same.

R.L. Hudson Wyoming L.S. No. 519  
 Signature of Surveyor Registration No.

STATE OF WYOMING,  
 Office of Clerk and Recorder,  
 County of Laramie

This "corner record" was filed for record on the 23<sup>rd</sup> day of May, 1972, was noted on the cross-index plat and is assigned page No. 14-65, in book No. ADONEA

[Signature]  
 County Official

Cross Index No. _____	T. _____	R. _____	Mer. _____
_____	T. _____	R. _____	Mer. _____
_____	T. _____	R. _____	Mer. _____
_____	T. _____	R. _____	Mer. _____
_____	T. _____	R. _____	Mer. _____
_____	T. _____	R. _____	Mer. _____
_____	T. _____	R. _____	Mer. _____

254247

State of Wyoming }  
County of Laramie } SS

This instrument was filed for record  
at 5:07 o'clock P. M. on the  
23<sup>rd</sup> day of March  
A. D. 1922 and duly recorded in  
Book \_\_\_\_\_ on page \_\_\_\_\_

*[Handwritten Signature]*

County Clerk & Ex Officio Register of Deeds  
By \_\_\_\_\_ Deputy